

MBF-Console™



*With MBF-Console, seeing is believing.
Identifying, monitoring & managing your ODBC,
JDBC and RPC transactions just got a whole lot easier*

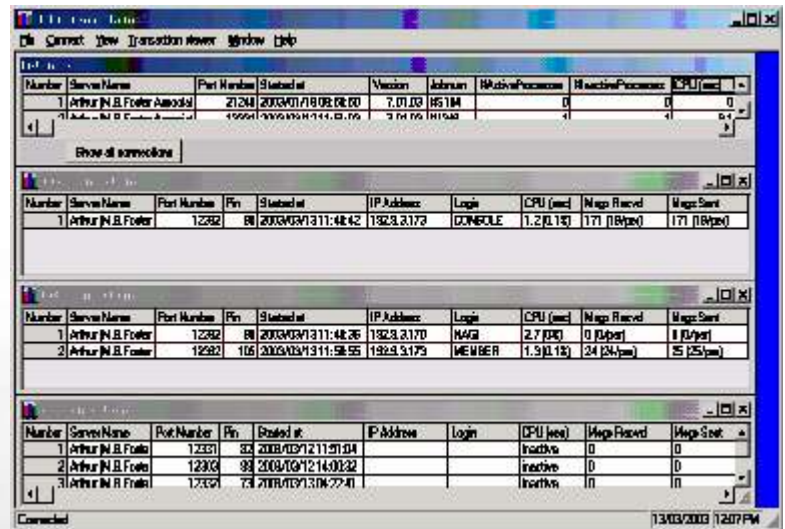
The nature of ODBC connections prohibits the system administrator from knowing the identity of ODBC users on the system. Typically, only the ODBC server processes (listeners) are visible in the job queue. With MBF-Console, you now have a window into those listener processes. MBF-Console monitors and controls the MBF-UDALink™ ODBC, and JDBC connections and ODBCLink/SE™ ODBC driver activities within your environment. It is the tool you need to help manage your world of client-server activities.

The transaction monitoring feature allows you to monitor 2 Phase Commit (2PC) and Remote Procedure Call (RPC) processes and performance. It extends the standard MBF-Console functions to include transactions generated from Windows servers, enabling monitoring and controlled elimination of stalled processes.

MBF-Console displays information related to the individual Process Identification Numbers (PINs) or Process Identification (PIDs) connected to the MBF-UDALink or ODBCLink/SE listener and provides the ability to turn logging on and off. Seeing inside the listener allows you to identify the PINs or PIDs that are consuming an excessive amount of CPU. Instead of aborting the entire listener job, simply choose to kill the individual PIN/PID.

Features:

- ◆ "GUI" user-interface
- ◆ Ability to start/stop logging for a single process
- ◆ Changes logging levels
- ◆ View/filter the log file in real time by date/time and PIN/PID
- ◆ Provides the ability to optionally "kill" a process (PIN/PID)
- ◆ See all listeners on the server
- ◆ See all connections to a single listener
- ◆ View details about a single connection



Get up to the second information on listener connections with our configurable refresh rates. MBF-Console displays information for all ODBC and JDBC server processes on a specific host, even when multiple listeners are running. Now that you can see the activities, this information can be captured for use in documentation, reports or presentations.

*For more information or to download your free demo version,
visit our website at www.mbfoster.com or call 1-800-ANSWERS*

